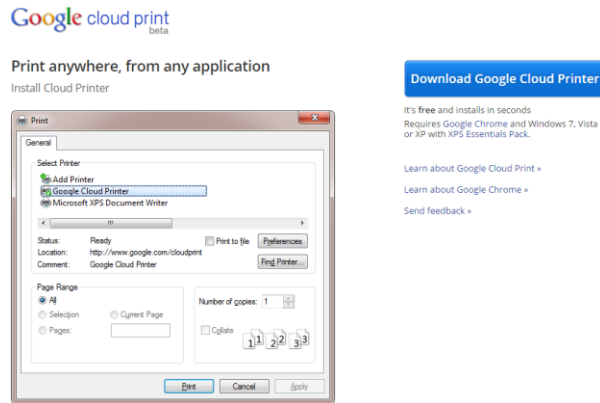


Windows Cloud Print

Download Google Cloud Print at <http://tools.google.com/dlpage/cloudprintdriver>.



Once the program is installed you can add the campus color printer by going to <http://go.uis.edu/googlepharocol>

You will need to be logged into Google for it to add the printer. You can use your UIS email address and password or your personal Google credentials that you would use for Gmail.

Print to **Pharos_Color_Stations**

After adding this printer for [redacted] you'll be able to use [Google Cloud Print](#) to print to this printer from your PC or mobile device.

[Add Printer](#)

To installed the black and white campus printer go to <http://go.uis.edu/googlepharosbw>





Print to **Pharos_BW_Stations**

After adding this printer for [redacted] you'll be able to use [Google Cloud Print](#) to print to this printer from your PC or mobile device.

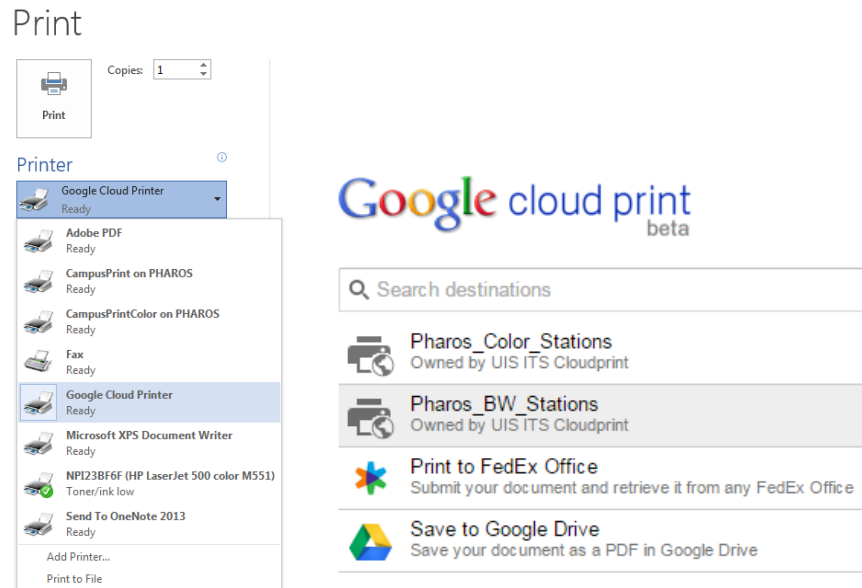
[Add Printer](#)

You can print a webpage to Pharos in Chrome by going to menu → print → change destination. Once there you should see a group called "Google Cloud Print" with both the color and black & white printers as options.

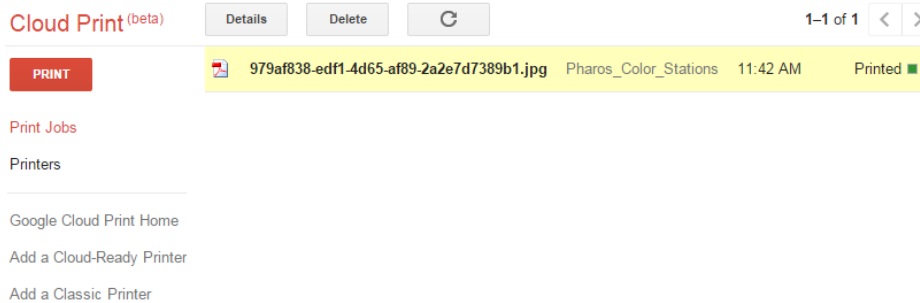
Google Cloud Print [Manage...](#)

-  Pharos_Color_Stations
-  Pharos_BW_Stations
-  Print to FedEx Office
-  Save to Google Drive

You can print documents by selecting the Google Cloud print option that will open a webpage to select a printer.



Another option to print is to go to www.google.com/cloudprint while logged into your Google account and upload the file that you would like printed.



For further assistance please call Information Technology Services at (217) 206-6000, email them at techsupport@uis.edu, or visit them in person in BRK 180.
